

# Pater noster à4

Leonhard Paminger  
(1495-1565)

Canto

Alto

Tenor

Basso

Pa - ter no - ster, qui es in coe - lis, qui es in coe -

Pa - ter no - ster, qui es in coe - lis, qui es in coe -

Pa - ter no - ster, Pa - ter no - ster, qui es in coe - lis, qui es

Pa - ter no - ster, qui es in coe - lis, qui es in coe - lis,

14

lis: San-cti-fi - ce - tur no - men tu - um, san-cti - fi - ce - tur

lis, in coe - lis: San - cti-fi-ce- tur no-men tu- um, no-men tu- um,

in coe - lis: San - cti - fi - ce -

qui es in coe - lis: San-cti-fi - ce - tur no - men tu - um, san-cti - fi - ce - tur no-men tu -

25

no-men tu - um, no-men tu- um. Ad-ve-ni - at, ad-ve- ni-at re- gnum tu - um, ad -

no - men tu- um. Ad - ve - ni - at, ad - ve-ni-at re-gnum tu- um, ad - ve - ni -

tur no - men tu - um. Ad - ve - ni - at re - gnum tu- um, ad - ve - ni -

um, no - men tu- um. Ad - ve - ni - at re-gnum tu- um, um,

38

ve - ni - at re - gnum tu- um. Fi - at vo - lun-tas tu - a, vo - lun-tas tu - a,

at re - gnum tu - um, re - gnum tu - um. Fi-at vo - lun-tas tu - a, vo-lun-tas tu-a, tu- a, tu-

at, ad-ve - ni-at re-gnum tu- um. Fi - at vo - lun-tas tu - a, vo-lun-tas tu- a,

ad - ve - ni - at re-gnum tu- um. Fi- at, fi - at vo - lun-tas tu - a, tu-

50

fi - at vo - lun-tas tu - a, si - cut in coe - lo, et in ter- ra, si - cut in coe -

a, fi- at vo-lun - tas tu- a, si-cut in coe- lo, et in ter- ra.

fi - at vo - lun-tas tu - a, si-cut in coe - lo, et in ter - ra, et in ter- ra, si - cut in

a, fi-at vo - lun- tas tu-a, si - cut in coe - lo, et in ter- ra, si - cut in

62

lo et in ter-ra. Pa-nem no-strum quo-ti-di-a-num, Pa-nem no-strum quo-ti-di-a-num, pa-nem no-coe-lo et in ter-ra. Pa-nem no-strum quo-ti-di-a-num, quo-ti-di-coe-lo et in ter-ra. Pa-nem no-strum quo-ti-di-a-num, quo-ti-di-a-num,

73

quo-ti-di-a-num da no-bis ho-di-e, da no-bis ho-di-e. Et strum quo-ti-di-a-num da no-bis ho-di-e, da no-bis ho-di-e. Et di-mit-te no-a-num, quo-ti-di-a-num da no-bis ho-di-e. Et di-mit-te no-quo-ti-di-a-num da no-bis ho-di-e. Et di-mit-te

84

di-mit-te no-bis de-bi-ta-nostra, si-cut et nos di-mit-ti-mus, bis de-bi-ta-nostra, de-bi-ta-nostra, si-cut et nos di-mit-ti-mus, bis de-bi-ta-nostra, de-bi-ta-nostra, si-cut et nos di-no-bis de-bi-ta-nostra, si-cut et nos

96

di-mit-ti-mus de-bi-to-ri-bus no-stris. Et ne nos in-du-cas in ten-di-mit-ti-mus de-bi-to-ri-bus no-stris. Et ne nos in-du-cas, et ne nos in-du-cas in mit-ti-mus de-bi-to-ri-bus no-stris. Et ne nos in-du-cas in ten-ta-ti-o-di-mit-ti-mus de-bi-to-ri-bus no-stris. Et ne nos in-du-cas, et ne nos in-du-cas in

108

ta-ti-o-nem. Sed li-be-ra nos a ma-lo. A-men. ten-ta-ti-o-nem. Sed li-be-ra nos, sed li-be-ra nos a ma-lo. A-men. nem, in ten-ta-ti-o-nem. Sed li-be-ra nos a ma-lo. A-men. ten-ta-ti-o-nem. Sed li-be-ra nos, sed li-be-ra nos a ma-lo. A-men.

# Pater noster à4

Leonhard Paminger  
(1495-1565)

**Canto**

11 Pa - ter no - ster, qui es in coe - lis, \_\_\_\_\_

21 qui es in coe - \_\_\_\_\_ lis: San-cti-fi - ce - tur no - men tu - um,

30 san-cti-fi - ce - tur \_\_\_\_\_ no - men tu - um, no - men tu - \_\_\_\_\_ um.

39 Ad - ve - ni - at, ad - ve - \_\_\_\_\_ ni - at re - \_\_\_\_\_ gnum tu - um, ad - ve - ni -

49 at re - gnum tu - \_\_\_\_\_ um. Fi - at vo - lun - tas tu - a, vo - lun - tas tu - a,

59 fi - at vo - lun - tas tu - a, \_\_\_\_\_ si - cut in coe - lo, et in ter - \_\_\_\_\_

68 ra, si - cut in coe - \_\_\_\_\_ lo et in ter - \_\_\_\_\_ ra.

77 Pa - nem no - strum quo - ti - di - a - \_\_\_\_\_ num, quo - ti - di - a - \_\_\_\_\_ num

85 da no - bis ho - di - e, da no - bis ho - \_\_\_\_\_ di - e. \_\_\_\_\_ Et di - mit -

94 te no - bis de - \_\_\_\_\_ bi - ta \_\_\_\_\_ no - \_\_\_\_\_ stra, si - cut et nos

104 di - mit - ti - mus, di - mit - \_\_\_\_\_ ti - mus de - bi - to - ri - bus no - \_\_\_\_\_ stris. Et

112 ne nos in - du - cas \_\_\_\_\_ in ten - ta - ti - o - \_\_\_\_\_

nem. Sed li - be - ra nos \_\_\_\_\_ a ma - lo. A - men.

# Pater Noster à4

Leonhard Paminger  
(1495-1565)

Alto

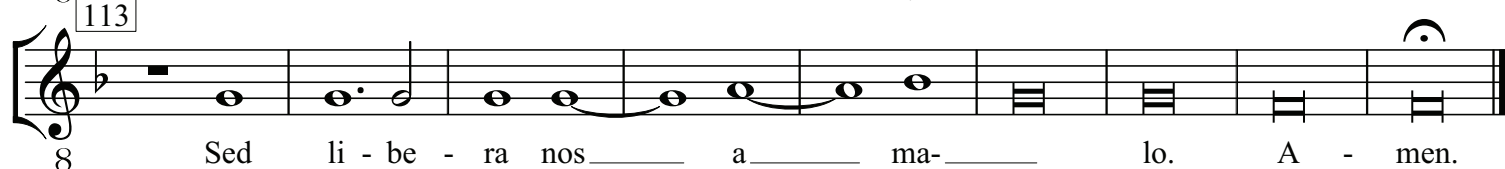
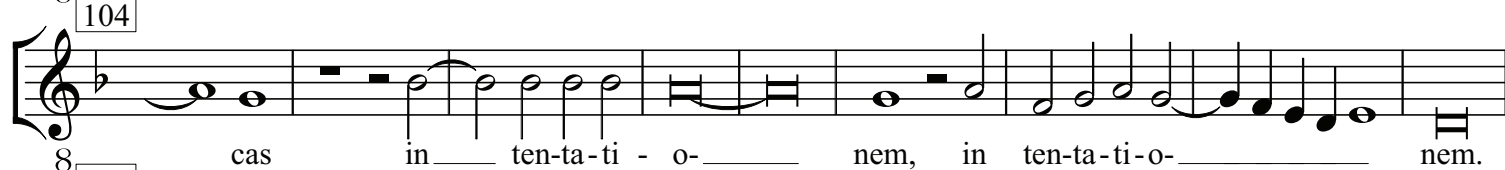
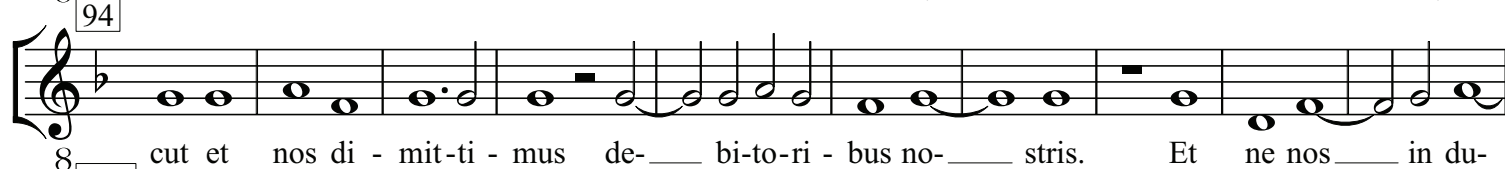
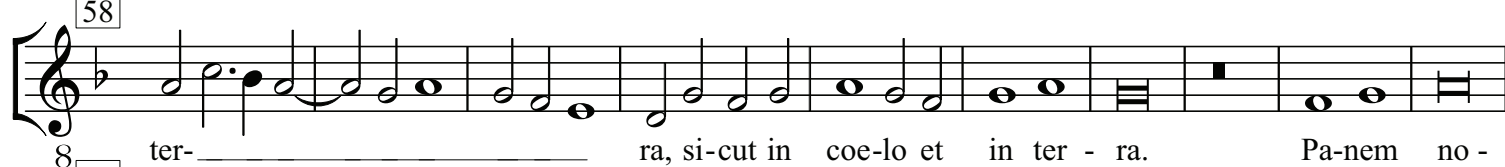
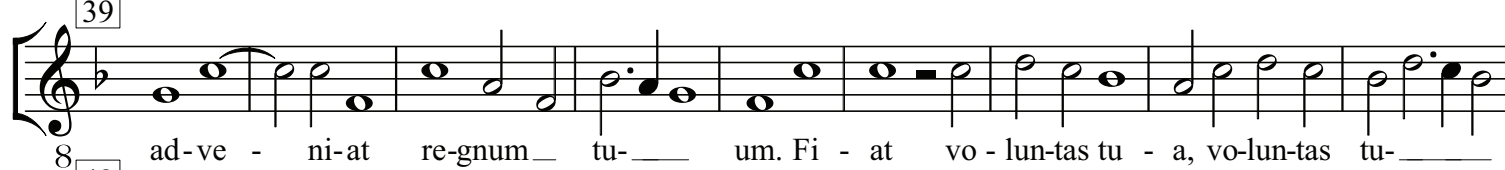
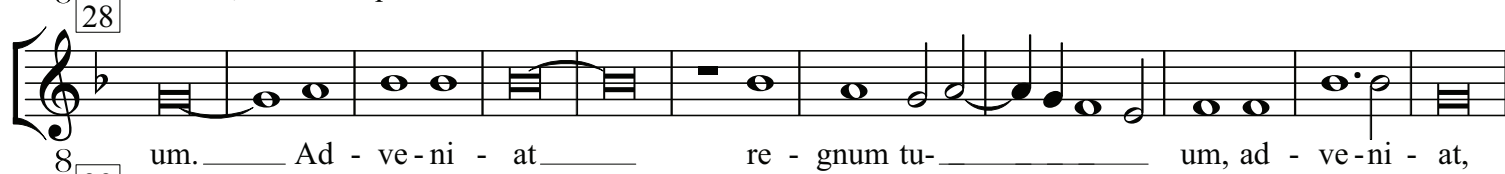
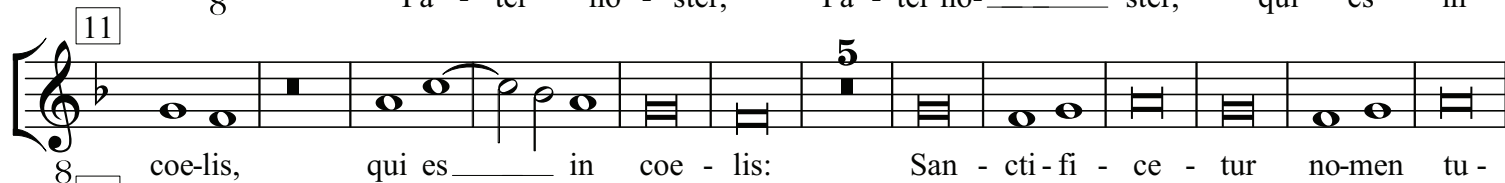
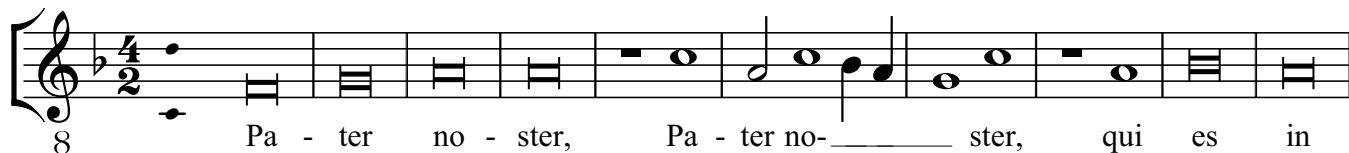


Pa- ter no - ster, qui es in coe - lis, qui es  
in coe- lis, in coe - lis: San - cti-fi-ce- tur no-men tu-  
um, no-men tu- um, no - men tu- um. Ad -  
ve-ni - at, ad - ve-ni-at re-gnum tu- um, ad - ve-ni - at re - gnum  
tu - um, re - gnum tu - um. Fi-at vo - lun-tas tu - a, vo-lun-tas tu-a, tu-  
a, tu- a, fi- at vo-lun-tas tu- a, si-cut in coe-  
lo, et in ter- ra. Pa- nem  
no-strum quo-ti-di - a-num, pa- nem no - strum quo - ti-di - a - num  
da no-bis ho- di - e, da no - bis ho- di-e. Et di - mit-te no- bis  
de-bi - ta no-stra, de-bi-ta no-stra, si-cut et nos  
di- mit- ti-mus, di- mit- ti-mus de-bi-to-ri - bus no - stris. Et ne nos in -  
du- cas, et ne nos in - du- cas in ten-ta - ti - o-  
nem. Sed li- be-ra nos, sed li - be - ra nos a ma - lo. A - men.

# Pater Noster à4

Leonhard Paminger  
(1495-1565)

Tenor



# Pater Noster à4

Leonhard Paminger  
(1495-1565)

Basso

Pa - ter no-\_\_\_\_\_ ster, qui es in coe - lis,  
qui es in coe-lis, qui es in coe - lis: San-cti-fi - ce - tur no-\_\_\_\_\_ men tu-  
\_\_\_\_\_, um, san-cti-fi - ce-tur no-men tu - um, \_\_\_\_\_ no - men tu-\_\_\_\_\_  
um. Ad - ve-ni - at re-gnum tu-\_\_\_\_\_ um, \_\_\_\_\_ ad - ve-ni - at  
re-gnum tu-\_\_\_\_\_ um. Fi-\_\_\_\_\_ at, fi - at vo - lun-tas tu - a, tu-\_\_\_\_\_ a, fi - at  
vo-lun-\_\_\_\_\_ tas tu-a, si-cut in coe - lo, et in ter-\_\_\_\_\_ ra,  
si-cut in coe-lo et in \_\_\_\_\_ ter - ra. Pa - nem no - strum quo - ti - di - a -  
num, quo-ti-\_\_\_\_\_ di - a - num, quo - ti - di - a - num da no-\_\_\_\_\_  
bis ho-\_\_\_\_\_ di-e. Et di - mit-te \_\_\_\_\_ no-bis \_\_\_\_\_ de-\_\_\_\_\_ bi-ta \_\_\_\_\_ no-\_\_\_\_\_  
stra, si-\_\_\_\_\_ cut et nos di-mit-\_\_\_\_\_ ti-mus de-bi - to-ri-bus no-stris.  
Et ne nos in - du-cas, et ne nos in-du-\_\_\_\_\_ cas in \_\_\_\_\_ ten-ta - ti - o-nem.  
Sed li - be - ra nos, \_\_\_\_\_ sed li - be - ra nos \_\_\_\_\_ a ma - lo. A - men.